

BM ANGUS

Presents

Annual Hay Country Angus Bull Sale

TUES., MARCH 17, 2020

1 P.M. • Atkinson, Neb. Sale Barn

40 BULLS SELL!

12 - TWO YEAR OLDS
18 - FALL YEARLINGS
10 - YEARLINGS

MORE SIRES

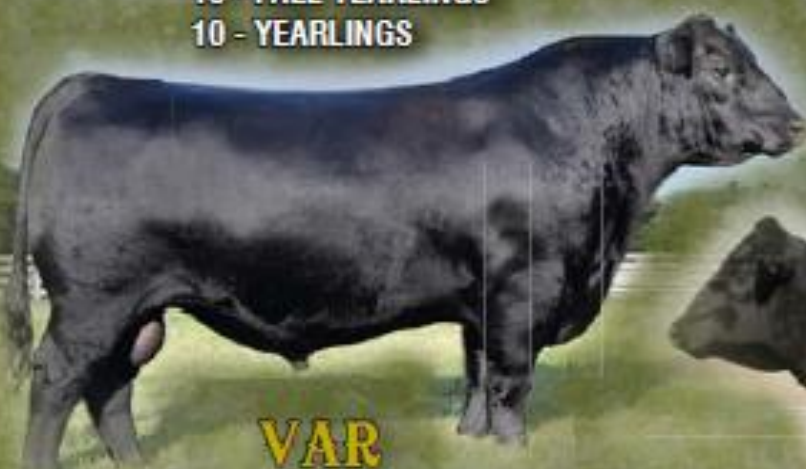
Capitalis 316

Innovation

Renown

Whitlock

Jindra Acclaim



**VAR
GENERATION 2100**



**PLATTEMERE
WEIGH UP K36**



SAV RESOURCE

BM ANGUS
Jeff Meradith
1710 Hwy 81
York, Neb. 68647
402-362-2471
jeffmeradith@gmail.com

Broadcasting live on
CattleUSA.com



CONSIGNOR
PRAIRIEDGE ANGUS
Neal & Ardythe Smith
(712) 249-0142

THE HAY COUNTRY ANGUS BULL SALE

SALE LOCATION:

Atkinson Livestock Market, Atkinson, NE

SALE DAY PHONES:

Atkinson Livestock Market (402) 925-5141

Sale may be viewed live or bids placed on internet at www.cattleusa.com (two days prior notification needed to bid)

Jeff's cell (402) 362-2471

Neal's cell (712) 249-0142

Wes Kilmurry (402) 340-4225

Mike Baxter-Auctioneer (402) 394-5686

INSPECTION OF CATTLE:

Bulls may be viewed at the Atkinson Livestock Market, Sunday March 15.

TERMS:

Cash. Please settle for cattle promptly.

TERMS & CONDITIONS:

Bulls will sell under the suggested Terms and Conditions of the American Angus Association.

TRUCKING: We will be glad to assist in making the best possible trucking arrangements.

SEMEN EVALUATION: All bulls will be tested and guaranteed for breeding soundness.

RETAINED INTEREST: On selected bulls, a one-third (1/3) semen interest is being retained. You will own full possession and 100% salvage value of the bull. Buyer will pay full amount of the bid price.

Note: Please plan to take your bull home the day of the sale or make arrangements with the sale barn staff if you must leave him until the next day.

Tuesday March 17, 2020, 1:00 PM

LIABILITY: All persons attending this sale do so at their own risk, legal or otherwise for their safety or the behavior of the animals. The Owner, Auction Service and sale staff assume no liability for property loss or any accidents that may occur.

ANNOUNCEMENTS: Any announcements from the block will take precedence over the sale book. Buyers unable to attend may send their bids to Atkinson Livestock Market at (402) 925-5141.

SALE DAY LUNCH: Complimentary hot beef lunch with your buyer number.

FIRST BREEDING SEASON

GUARANTEE: All bulls selling for \$3,000 or more will be covered 50% by the breeder if they are injured during their first breeding season and not able to return to service during the first breeding season. Breeding season is defined as the 90-day period following the first turnout of the bulls. 50% of the value of the injured bull, minus one-half of the salvage value, will be given as credit in a future sale or toward a replacement bull if one is available. Salvage value, if any, will be split equally between the breeder and the buyer. All injured bulls must be diagnosed by a veterinarian. Please notify us as soon as possible should injury occur and prior to the injured bull being sold for salvage. All claims must be made by September 1, 2020.

Sale may be viewed live, or bids placed on internet at www.cattleusa.com.

(If you plan to bid on-line a two day prior notification is needed).

Hay Country Bull Sale

1	Tag: 1902	BM Acclaim 1902 529	+*19669879
	Tattoo: 1902	<i>Bull HD50K</i>	<i>Birth Date: 02/27/19</i>

*Jindra 3rd Dimension[D2F-DDF-XF] BW: 80
 *Jindra Acclaim[AMF-CAF-XF] WW Adj:
 +Jindra Blackbird Lassy 1111 WW Ratio:
 #*Plattemere Weigh Up K360[AMF-CAF-XF] YW Adj:
 BM Princess 529 29 WU YW Ratio:
 BM Princess 29 309 P YH Adj:

CED	BW	WW	YW	CEM	Milk	\$EN	CW	Marb	RE	Fat	\$M	\$F	\$B
Acc	Acc	Acc	Acc	Acc	Acc	Acc	Acc	Acc	Acc	Acc	\$W	\$G	
+0	+2.9	+75	+143	+7	+28	-54	+65	+62	+56	-0.15	+23	+130	+184
.34	.50	.43	.39	.31	.32		.39	.36	.36	.32	+67	+54	

Starting off the Lots with these Yearling ET Acclaim Sons

2	Tag: 1903	BM Acclaim 1903 529	+*19669881
	Tattoo: 1903	<i>Bull HD50K</i>	<i>Birth Date: 03/01/19</i>

*Jindra 3rd Dimension[D2F-DDF-XF] BW: 70
 *Jindra Acclaim[AMF-CAF-XF] WW Adj:
 +Jindra Blackbird Lassy 1111 WW Ratio:
 #*Plattemere Weigh Up K360[AMF-CAF-XF] YW Adj:
 BM Princess 529 29 WU YW Ratio:
 BM Princess 29 309 P YH Adj:

CED	BW	WW	YW	CEM	Milk	\$EN	CW	Marb	RE	Fat	\$M	\$F	\$B
Acc	Acc	Acc	Acc	Acc	Acc	Acc	Acc	Acc	Acc	Acc	\$W	\$G	
+8	+1.0	+78	+149	+12	+28	-51	+69	+61	+55	-0.11	+37	+128	+181
.35	.51	.44	.39	.31	.32		.40	.36	.36	.32	+77	+53	

ET Full brother to Lot 1

3	Tag: 1901	BM Acclaim 4015 1901	+19676171
	Tattoo: 1901	<i>Bull HD50K</i>	<i>Birth Date: 02/26/19</i>

*Jindra 3rd Dimension[D2F-DDF-XF] BW: 80
 *Jindra Acclaim[AMF-CAF-XF] WW Adj:
 +Jindra Blackbird Lassy 1111 WW Ratio:
 #Bon View New Design 1407[DDC-AMF-XF] YW Adj:
 +EF Forever Lady 4015[DDF] YW Ratio:
 +Toebben Forever Lady 097G[AMF] YH Adj:

CED	BW	WW	YW	CEM	Milk	\$EN	CW	Marb	RE	Fat	\$M	\$F	\$B
Acc	Acc	Acc	Acc	Acc	Acc	Acc	Acc	Acc	Acc	Acc	\$W	\$G	
+4	+2.0	+56	+122	+9	+30	-37	+47	+85	+37	-0.02	+38	+119	+181
.37	.53	.46	.42	.34	.35		.42	.39	.38	.35	+52	+61	

Full brother to Lot 4

4	Tag: 1904	BM Acclaim 4015 1904	+19676174
	Tattoo: 1904	<i>Bull HD50K</i>	<i>Birth Date: 03/03/19</i>

*Jindra 3rd Dimension[D2F-DDF-XF] BW: 85
 *Jindra Acclaim[AMF-CAF-XF] WW Adj:
 +Jindra Blackbird Lassy 1111 WW Ratio:
 #Bon View New Design 1407[DDC-AMF-XF] YW Adj:
 +EF Forever Lady 4015[DDF] YW Ratio:
 +Toebben Forever Lady 097G[AMF] YH Adj:

CED	BW	WW	YW	CEM	Milk	\$EN	CW	Marb	RE	Fat	\$M	\$F	\$B
Acc	Acc	Acc	Acc	Acc	Acc	Acc	Acc	Acc	Acc	Acc	\$W	\$G	
+2	+2.8	+58	+123	+7	+31	-48	+54	+63	+29	-0.22	+27	+115	+167
.36	.52	.46	.41	.33	.35		.41	.38	.37	.34	+50	+52	

The Dam of Lot 3 and 4 we lost this Fall at the age of 15 she has 102 calves registered we owned this cow with Deer Valley out of Tennessee

5	Tag: 1835	BM/HAF/RCA Resource 1835	+19134971
	Tattoo: 1835	<i>Bull</i>	<i>Birth Date: 05/06/18</i>

+Rito 707 of Ideal 3407 7075[OSF] BW: 88
 #+*S A V Resource 1441[AMF-CAF-XF] WW Adj:
 *S A V Blackcap May 4136[CAF] WW Ratio:
 #+S A V Bismarck 5682[AMF-CAF-XF] YW Adj:
 +*MF Elba 5010[OSF] YW Ratio:
 #+S A V Elba 4436[AMF] YH Adj:

CED	BW	WW	YW	CEM	Milk	\$EN	CW	Marb	RE	Fat	\$M	\$F	\$B
Acc	Acc	Acc	Acc	Acc	Acc	Acc	Acc	Acc	Acc	Acc	\$W	\$G	
I+7	I+2.2	I+61	I+110	I+5	I+20	-17	I+43	I+.08	I+.66	I+.015	+54	+82	+109
.05	.05	.05	.05	.05	.05		.05	.05	.05	.05	+55	+26	

This Bull is a full brother in blood to the Genex bull SAV Pathfinder

6	Tag: 1834	BM Capitalist 1834 1658 316	+19138005
	Tattoo: 1834	<i>Bull</i>	<i>Birth Date: 04/27/18</i>

#*Connealy Capitalist 028[AMF-CAF-XF] BW: 77
 +*LD Capitalist 316[AMF-CAF-XF] WW Adj: 640
 LD Dixie Erica 2053[AMF-NHF] WW Ratio: 100
 Limestone Jupiter U449[AMF-CAF-XF] YW Adj:
 +*KLR Elba 1658 YW Ratio:
 #+S A V Elba 4436[AMF] YH Adj:

CED	BW	WW	YW	CEM	Milk	\$EN	CW	Marb	RE	Fat	\$M	\$F	\$B
Acc	Acc	Acc	Acc	Acc	Acc	Acc	Acc	Acc	Acc	Acc	\$W	\$G	
I+6	I+.5	I+57	I+102	I+9	I+25	-16	I+40	I+.27	I+.54	I+.034	+42	+96	+128
.05	.05	.05	.05	.05	.05		.05	.05	.05	.05	+61	+32	

The Dam of this Bull is owned by Marshall and Fenner and Upchurch Brothers Awesome Cow

7	Tag: 1817	BM Recharge 1817 S82U	*19101684
	Tattoo: 1817	<i>Bull HD50K</i>	<i>Birth Date: 02/10/18</i>

+Rito 707 of Ideal 3407 7075[OSF] BW: 82
 +*S A V Recharge 3436[AMF-CAF-XF] WW Adj: 638
 *S A V Blackcap May 4136[CAF] WW Ratio: 113
 #S A V 8180 Traveler 004[AMF-CAF-XF] YW Adj:
 +ALC Blackcap S82U[AMF-CAF] YW Ratio:
 +S A V Blackcap May 4546[CAC-AMF] YH Adj:

CED	BW	WW	YW	CEM	Milk	\$EN	CW	Marb	RE	Fat	\$M	\$F	\$B
Acc	Acc	Acc	Acc	Acc	Acc	Acc	Acc	Acc	Acc	Acc	\$W	\$G	
-1	+3.8	+51	+88	+7	+28	-11	+39	+04	+30	-0.05	+43	+51	+73
.31	.49	.43	.35	.28	.30		.35	.31	.31	.27	+50	+22	

Out of the Sire Recharge and his dam is a full sister to Net Return and Net Worth power in the blood

8	Tag: 1818	BM Resource 1818 1225	19110157
	Tattoo: 1818	<i>Bull</i>	<i>Birth Date: 02/11/18</i>

+Rito 707 of Ideal 3407 7075[OSF] BW: 72
 #+*S A V Resource 1441[AMF-CAF-XF] WW Adj: 657
 *S A V Blackcap May 4136[CAF] WW Ratio: 116
 #*Connealy Final Product[AMF-CAF-XF] YW Adj:
 MGMA Blackbird 1225 YW Ratio:
 +Riverbend Blackbird 4348 YH Adj:

CED	BW	WW	YW	CEM	Milk	\$EN	CW	Marb	RE	Fat	\$M	\$F	\$B
Acc	Acc	Acc	Acc	Acc	Acc	Acc	Acc	Acc	Acc	Acc	\$W	\$G	
+7	+1.0	+64	+114	+7	+26	-27	I+47	I+.24	I+.76	I+.017	+51	+78	+113
.25	.36	.31	.22	.21	.22		.05	.05	.05	.05	+65	+35	

Hay Country Bull Sale

9	Tag: 1824	BM Capitalist 1824 504	19099893
	Tattoo: 1824	Bull	Birth Date: 02/23/18

#*Connealy Capitalist 028[AMF-CAF-XF] BW: 80
 +*LD Capitalist 316[AMF-CAF-XF] WW Adj: 642
 LD Dixie Erica 2053[AMF-NHF] WW Ratio: 113
 YW Adj:
 YW Ratio:
 YH Adj:

#*Connealy Consensus 7229[AMF-CAF-XF]
 +BM Everelda 504 3496 CC
 +Riverbend Everelda 3496[NHF]

CED	BW	WW	YW	CEM	Milk	\$EN	CW	Marb	RE	Fat	\$M	\$F	\$B
Acc	Acc	Acc	Acc	Acc	Acc		Acc	Acc	Acc	Acc	\$W	\$G	
+7	+1.7	+62	+108	+10	+30	-18	I+37	I+59	I+44	I+.031	+54	+86	+133
.25	.35	.30	.22	.16	.16		.05	.05	.05	.05	+68	+46	

This one goes back to the great 1905 cow on the Dam side

10	Tag: 1804	BM Capitalist 1804 48	19099895
	Tattoo: 1804	Bull	Birth Date: 02/05/18

#*Connealy Capitalist 028[AMF-CAF-XF] BW: 78
 +*LD Capitalist 316[AMF-CAF-XF] WW Adj: 685
 LD Dixie Erica 2053[AMF-NHF] WW Ratio: 100
 YW Adj:
 YW Ratio:
 YH Adj:

#*Connealy Consensus 7229[AMF-CAF-XF]
 BM Lass 48 138 CC
 #Basin Eileenmere Lass 138R

CED	BW	WW	YW	CEM	Milk	\$EN	CW	Marb	RE	Fat	\$M	\$F	\$B
Acc	Acc	Acc	Acc	Acc	Acc		Acc	Acc	Acc	Acc	\$W	\$G	
I+8	I+.8	I+59	I+103	I+11	I+28	-14	I+39	I+54	I+49	I+.033	+56	+84	+129
.05	.05	.05	.05	.05	.05		.05	.05	.05	.05	+68	+45	

These 316 sons are always good

11	Tag: 1823	BM Hot Iron 1823 387	19110126
	Tattoo: 1823	Bull HD50K	Birth Date: 02/21/18

#*S A V Iron Mountain 8066[AMF-CAF-XF] BW: 87
 +*S A V Hot Iron 0941[AMF-CAF-XF] WW Adj: 655
 +*Champion Hill Georgina 6174 WW Ratio: 116
 YW Adj:
 YW Ratio:
 YH Adj:

#Sitz Upward 307R[AMF-CAF-XF]
 BM Cleatus 387 87 SU
 +BM Cleatus 87 2967 602C

CED	BW	WW	YW	CEM	Milk	\$EN	CW	Marb	RE	Fat	\$M	\$F	\$B
Acc	Acc	Acc	Acc	Acc	Acc		Acc	Acc	Acc	Acc	\$W	\$G	
-13	+4.6	+77	+133	+4	+18	-30	+61	+31	+29	+030	+25	+99	+130
.32	.53	.46	.38	.30	.32		.39	.36	.36	.33	+59	+31	

NOT a Heifer Bull. We all sale calves by the pound and this one will put weight on your calves Stout Bull

12	Tag: 1816	BM Widespread 1816 309	+19122731
	Tattoo: 1816	Bull	Birth Date: 03/30/18

#*N Bar Emulation EXT[AMF-CAF-XF] BW: 95
 #Whitstone Widespread MB[AMF-D2F-XF] WW Adj: 725
 M B Rachel 2173 WW Ratio: 100
 YW Adj:
 YW Ratio:
 YH Adj:

#R R Black Label 4560
 #+K F Princess 309
 Bon View Princess 1072

CED	BW	WW	YW	CEM	Milk	\$EN	CW	Marb	RE	Fat	\$M	\$F	\$B
Acc	Acc	Acc	Acc	Acc	Acc		Acc	Acc	Acc	Acc	\$W	\$G	
I-2	I+3.2	I+48	I+78	I+8	I+22	-14	I+26	I+20	I+11	I+.029	+27	+62	+86
.05	.05	.05	.05	.05	.05		.05	.05	.05	.05	+39	+23	

Out of Pathfinder Cow

14	Tag: 1812	BM Thunder 1812 309	+19134890
	Tattoo: 1812	Bull	Birth Date: 03/27/18

#Baldridge Kaboom K243 KCF[CAF] BW: 80
 #Connealy Thunder[AMF-CAF-XF] WW Adj: 722
 #Parka of Conanga 241[CAC-AMF-NHF] WW Ratio: 100
 YW Adj:
 YW Ratio:
 YH Adj:

#R R Black Label 4560
 #+K F Princess 309
 Bon View Princess 1072

CED	BW	WW	YW	CEM	Milk	\$EN	CW	Marb	RE	Fat	\$M	\$F	\$B
Acc	Acc	Acc	Acc	Acc	Acc		Acc	Acc	Acc	Acc	\$W	\$G	
I+4	I+.7	I+44	I+75	I+7	I+25	-9	I+24	I+.48	I+.21	I+.013	+50	+60	+100
.05	.05	.05	.05	.05	.05		.05	.05	.05	.05	+46	+40	

Dam is A Pathfinder

15	Tag: 1815	BM Bismarck 1815 328	+19134886
	Tattoo: 1815	Bull	Birth Date: 03/30/18

#+*G A R Grid Maker[AMF-CAF-XF] BW: 80
 #+S A V Bismarck 5682[AMF-CAF-XF] WW Adj: 603
 S A V Abigale 0451 WW Ratio: 100
 YW Adj:
 YW Ratio:
 YH Adj:

#Whitstone Widespread MB[AMF-D2F-XF]
 BM Blackbird 328 603 5029[DDF]
 C A Blackbird 603

CED	BW	WW	YW	CEM	Milk	\$EN	CW	Marb	RE	Fat	\$M	\$F	\$B
Acc	Acc	Acc	Acc	Acc	Acc		Acc	Acc	Acc	Acc	\$W	\$G	
I+8	I+.8	I+50	I+87	I+12	I+19	-2	I+28	I+.05	I+.43	I+.014	+46	+78	+100
.05	.05	.05	.05	.05	.05		.05	.05	.05	.05	+48	+22	

Heifer Bull

16	Tag: 1821	BM Playbook 1821 12	19101776
	Tattoo: 1821	Bull HD50K	Birth Date: 02/16/18

#*Basin Payweight 1682[AMF-CAF-XF] BW: 70
 +*TEX Playbook 5437[AMF-CAF-XF] WW Adj: 585
 +*Rita 1C43 of 9M26 Complete[DDF] WW Ratio: 103
 YW Adj:
 YW Ratio:
 YH Adj:

#*S A V Brand Name 9115[AMF-CAF-XF]
 +BM Lucy 12 0987 BN
 +Basin Lucy 0987

CED	BW	WW	YW	CEM	Milk	\$EN	CW	Marb	RE	Fat	\$M	\$F	\$B
Acc	Acc	Acc	Acc	Acc	Acc		Acc	Acc	Acc	Acc	\$W	\$G	
+14	-.4	+56	+96	+12	+26	+0	+34	+43	+56	+029	+64	+87	+127
.35	.54	.47	.38	.31	.29		.39	.35	.35	.31	+68	+41	

Heifer Bull

17	Tag: 1808	BM Playbook 1808 415	19101754
	Tattoo: 1808	Bull	Birth Date: 02/08/18

#*Basin Payweight 1682[AMF-CAF-XF] BW: 78
 +*TEX Playbook 5437[AMF-CAF-XF] WW Adj: 661
 +*Rita 1C43 of 9M26 Complete[DDF] WW Ratio: 117
 YW Adj:
 YW Ratio:
 YH Adj:

#*Plattermere Weigh Up K360[AMF-CAF-XF]
 +BM Forever Lady 415 4015 WU
 +EF Forever Lady 4015[DDF]

CED	BW	WW	YW	CEM	Milk	\$EN	CW	Marb	RE	Fat	\$M	\$F	\$B
Acc	Acc	Acc	Acc	Acc	Acc		Acc	Acc	Acc	Acc	\$W	\$G	
+9	+1.4	+69	+121	+10	+33	-18	I+44	I+57	I+.43	I+.011	+66	+98	+145
.25	.36	.31	.22	.18	.12		.05	.05	.05	.05	+79	+47	

Heifer Bull that spreads the numbers

Hay Country Bull Sale

18	Tag: 1820	BM Whitlock 1820 39S	+19110173
	Tattoo: 1820	Bull	Birth Date: 02/15/18

#*S Chisum 6175[AMF-CAF-XF] BW: 88
 #*S Whitlock 179[AMF-CAF-XF] WW Adj: 541
 #S Pride Anna 709[OSF] WW Ratio: 100
 YW Adj:
 YW Ratio:
 YH Adj:

#Basin Max 602C[AMF-CAF-XF]
 +SDCC Lady 39S
 +Ideal 0478 OF 6807 7412

CED	BW	WW	YW	CEM	Milk	\$EN	CW	Marb	RE	Fat	\$M	\$F	\$B
Acc	Acc	Acc	Acc	Acc	Acc		Acc	Acc	Acc	Acc	\$W	\$G	
I+3	I+1.9	I+60	I+110	I+8	I+23	-17	I+47	I+27	I+48	I+.026	+37	+85	+117
.05	.05	.05	.05	.05	.05		.05	.05	.05	.05	+58	+32	

Last of the 2 year olds a Beast

19	Tag: 1870	BM Capitalist 1870 5010	+19645805
	Tattoo: 1870	Bull	Birth Date: 08/20/18

#*Connealy Capitalist 028[AMF-CAF-XF] BW: 76
 +*LD Capitalist 316[AMF-CAF-XF] WW Adj:
 LD Dixie Erica 2053[AMF-NHF] WW Ratio:
 YW Adj:
 YW Ratio:
 YH Adj:

#+S A V Bismarck 5682[AMF-CAF-XF]
 +*MF Elba 5010[OSF]
 #+S A V Elba 4436[AMF]

CED	BW	WW	YW	CEM	Milk	\$EN	CW	Marb	RE	Fat	\$M	\$F	\$B
Acc	Acc	Acc	Acc	Acc	Acc		Acc	Acc	Acc	Acc	\$W	\$G	
I+11	+2	+60	+101	I+12	+26	-16	I+37	I+39	I+38	I+.033	+55	+88	+124
.05	.35	.23	.22	.05	.16		.05	.05	.05	.05	+65	+36	

a really complete bull i really like these 316 sons

20	Tag: 1860	BM Capitalist 1860 302	19645820
	Tattoo: 1860	Bull	Birth Date: 09/28/18

#*Connealy Capitalist 028[AMF-CAF-XF] BW: 75
 +*LD Capitalist 316[AMF-CAF-XF] WW Adj:
 LD Dixie Erica 2053[AMF-NHF] WW Ratio:
 YW Adj:
 YW Ratio:
 YH Adj:

#S A V Pioneer 7301[AMF-CAF-XF]
 L A / B M Lucy 302
 +L A Lucy 060

CED	BW	WW	YW	CEM	Milk	\$EN	CW	Marb	RE	Fat	\$M	\$F	\$B
Acc	Acc	Acc	Acc	Acc	Acc		Acc	Acc	Acc	Acc	\$W	\$G	
+7	+5	+60	+102	+13	+28	-13	I+39	I+37	I+47	I+.047	+60	+86	+120
.24	.34	.23	.21	.14	.16		.05	.05	.05	.05	+67	+35	

another really nice 316 son

21	Tag: 1899	BM Treasure 1899 29	19649558
	Tattoo: 1899	Bull	Birth Date: 10/07/18

#*V A R Discovery 2240[AMF-CAF-XF] BW: 81
 +*MGR Treasure[AMF-CAF-XF] WW Adj:
 +*SJH Impression of 6108 1614 WW Ratio:
 YW Adj:
 YW Ratio:
 YH Adj:

#S A V Pioneer 7301[AMF-CAF-XF]
 BM Princess 29 309 P
 #+K F Princess 309

CED	BW	WW	YW	CEM	Milk	\$EN	CW	Marb	RE	Fat	\$M	\$F	\$B
Acc	Acc	Acc	Acc	Acc	Acc		Acc	Acc	Acc	Acc	\$W	\$G	
+6	+7	+64	+116	+13	+20	-14	I+37	I+87	I+40	I+.025	+56	+67	+127
.24	.36	.25	.24	.18	.17		.05	.05	.05	.05	+58	+60	

The only Treasurer son in the Sale a Half brother to Lot 1 and 2

22	Tag: 1853	BM Primo 1853 023	19644906
	Tattoo: 1853	Bull	Birth Date: 09/07/18

*Dameron First Class BW: 84
 +*Colburn Primo 5153[AMF-CAF-XF] WW Adj:
 +*Silveiras Saras Dream 1339 WW Ratio:
 YW Adj:
 YW Ratio:
 YH Adj:

Plainview Lutton E102[AMF-NHF]
 BM Blackcap Bell 023 323 Lut[DDF-OHF]
 TO 837 Blackcap Bell 323

CED	BW	WW	YW	CEM	Milk	\$EN	CW	Marb	RE	Fat	\$M	\$F	\$B
Acc	Acc	Acc	Acc	Acc	Acc		Acc	Acc	Acc	Acc	\$W	\$G	
+3	+3.9	+54	+85	+8	+20	-21	I+29	I+30	I+30	I+.042	+33	+71	+100
.19	.36	.24	.21	.13	.15		.05	.05	.05	.05	+41	+29	

a Half brother to the donation bull in 2018 He is really Good

23	Tag: 1878	BM Innovation 1878 0178	19645705
	Tattoo: 1878	Bull	Birth Date: 09/04/18

#*Connealy Impression[AMF-CAF-XF] BW: 79
 #*MAR Innovation 251[AMF-CAF-XF] WW Adj:
 #*MAR Final Kahuna 856[DDF] WW Ratio:
 YW Adj:
 YW Ratio:
 YH Adj:

#+S A V Bismarck 5682[AMF-CAF-XF]
 +Werner Lucy 0178
 +Werner Lucy 1236[AMF]

CED	BW	WW	YW	CEM	Milk	\$EN	CW	Marb	RE	Fat	\$M	\$F	\$B
Acc	Acc	Acc	Acc	Acc	Acc		Acc	Acc	Acc	Acc	\$W	\$G	
+5	+2.0	+59	+105	+11	+25	-18	I+35	I+35	I+61	I-.002	+55	+89	+129
.24	.36	.25	.24	.21	.23		.05	.05	.05	.05	+56	+40	

24	Tag: 1855	BM Innovation 1855 5539	19645713
	Tattoo: 1855	Bull	Birth Date: 09/10/18

#*Connealy Impression[AMF-CAF-XF] BW: 76
 #*MAR Innovation 251[AMF-CAF-XF] WW Adj:
 #*MAR Final Kahuna 856[DDF] WW Ratio:
 YW Adj:
 YW Ratio:
 YH Adj:

#+BT Right Time 24J[AMF-CAF-XF]
 Fink Donna 5539 34 24J[DDF]
 Finks Donna 34 1345 N D

CED	BW	WW	YW	CEM	Milk	\$EN	CW	Marb	RE	Fat	\$M	\$F	\$B
Acc	Acc	Acc	Acc	Acc	Acc		Acc	Acc	Acc	Acc	\$W	\$G	
+6	+1.5	+49	+87	+9	+26	-11	I+28	I+41	I+59	I-.006	+53	+72	+115
.24	.36	.25	.22	.19	.23		.05	.05	.05	.05	+50	+44	

Innovation was the favorite bull of the Herdsman at Genex West in Billings Montana. This one will make awesome momma cows with the Donna Family backing him

25	Tag: 1839	BM Weigh UP 1839 0426	+19645666
	Tattoo: 1839	Bull	Birth Date: 09/06/18

#Sitz Upward 307R[AMF-CAF-XF] BW: 79
 #*Plattermere Weigh Up K360[AMF-CAF-XF] WW Adj:
 #Barbara of Plattermere 337[DDF] WW Ratio:
 YW Adj:
 YW Ratio:
 YH Adj:

#+S A V Bismarck 5682[AMF-CAF-XF]
 +*Buford Elba 0426
 #+S A V Elba 4436[AMF]

CED	BW	WW	YW	CEM	Milk	\$EN	CW	Marb	RE	Fat	\$M	\$F	\$B
Acc	Acc	Acc	Acc	Acc	Acc		Acc	Acc	Acc	Acc	\$W	\$G	
I+10	I+1.1	I+63	I+109	I+12	I+23	-10	I+45	I+36	I+54	I-.003	+64	+94	+134
.05	.05	.05	.05	.05	.05		.05	.05	.05	.05	+67	+40	

Lots 25 26 and 27 are Flush Brothers

Hay Country Bull Sale

26	Tag: 1880	BM Weigh UP 1880 0426	+19645668
	Tattoo: 1880	Bull	Birth Date: 09/06/18

#Sitz Upward 307R[AMF-CAF-XF] BW: 70
 #*Plattmereg Weigh Up K360[AMF-CAF-XF] WW Adj:
 #Barbara of Plattmereg 337[DDF] WW Ratio:
 #+S A V Bismarck 5682[AMF-CAF-XF] YW Adj:
 #+S A V Elba 4436[AMF] YW Ratio:
 #+S A V Elba 4436[AMF] YH Adj:

CED	BW	WW	YW	CEM	Milk	\$EN	CW	Marb	RE	Fat	\$M	\$F	\$B
Acc	Acc	Acc	Acc	Acc	Acc		Acc	Acc	Acc	Acc	\$W	\$G	
I+10	-6	+60	+103	I+12	+22	-10	I+45	I+36	I+54	I-003	+61	+91	+131
.05	.35	.24	.23	.05	.22		.05	.05	.05	.05	+61	+40	

Plattmereg Weigh Up is deceased and his Seman brings \$300. or more. Full brother to 25 and 27

27	Tag: 1866	BM Weigh Up 1866	+19645671
	Tattoo: 1866	Bull	Birth Date: 09/06/18

#Sitz Upward 307R[AMF-CAF-XF] BW: 80
 #*Plattmereg Weigh Up K360[AMF-CAF-XF] WW Adj:
 #Barbara of Plattmereg 337[DDF] WW Ratio:
 #+S A V Bismarck 5682[AMF-CAF-XF] YW Adj:
 #+S A V Elba 4436[AMF] YW Ratio:
 #+S A V Elba 4436[AMF] YH Adj:

CED	BW	WW	YW	CEM	Milk	\$EN	CW	Marb	RE	Fat	\$M	\$F	\$B
Acc	Acc	Acc	Acc	Acc	Acc		Acc	Acc	Acc	Acc	\$W	\$G	
I+10	+1.5	+64	+110	I+12	+22	-10	I+45	I+36	I+54	I-003	+64	+94	+134
.05	.35	.24	.23	.05	.22		.05	.05	.05	.05	+62	+40	

The Dam of 25 26 and 27 is a Full sister to Buford Elba 9000 that Brought\$60000 as an aged Cow.

28	Tag: 1841	BM Remedy 1841 5010	+19645748
	Tattoo: 1841	Bull	Birth Date: 08/14/18

#Connealy Thunder[AMF-CAF-XF] BW: 77
 #*CTS Remedy 1T01[AMF-CAF-XF] WW Adj:
 CTS 7V03 Bellemere Maid 9T02[DDF-NHF] WW Ratio:
 #+S A V Bismarck 5682[AMF-CAF-XF] YW Adj:
 #+S A V Elba 4436[AMF] YW Ratio:
 #+S A V Elba 4436[AMF] YH Adj:

CED	BW	WW	YW	CEM	Milk	\$EN	CW	Marb	RE	Fat	\$M	\$F	\$B
Acc	Acc	Acc	Acc	Acc	Acc		Acc	Acc	Acc	Acc	\$W	\$G	
I+7	+8	+54	+102	I+11	+26	-17	I+41	I+35	I+51	I-003	+59	+99	+138
.05	.35	.23	.22	.05	.20		.05	.05	.05	.05	+55	+39	

Lot 28 and 29 are Flush Brothers

29	Tag: 1885	BM Remedy 1885 5010	+19645749
	Tattoo: 1885	Bull	Birth Date: 08/25/18

#Connealy Thunder[AMF-CAF-XF] BW: 81
 #*CTS Remedy 1T01[AMF-CAF-XF] WW Adj:
 CTS 7V03 Bellemere Maid 9T02[DDF-NHF] WW Ratio:
 #+S A V Bismarck 5682[AMF-CAF-XF] YW Adj:
 #+S A V Elba 4436[AMF] YW Ratio:
 #+S A V Elba 4436[AMF] YH Adj:

CED	BW	WW	YW	CEM	Milk	\$EN	CW	Marb	RE	Fat	\$M	\$F	\$B
Acc	Acc	Acc	Acc	Acc	Acc		Acc	Acc	Acc	Acc	\$W	\$G	
I+7	+8	+55	+104	I+11	+26	-17	I+41	I+35	I+51	I-003	+60	+100	+139
.05	.35	.23	.22	.05	.20		.05	.05	.05	.05	+55	+39	

Out of the Great MF Elba 5010 bred by Marshall and Fenner from Missouri

30	Tag: 1854	BM Sensation 1854 535	19653748
	Tattoo: 1854	Bull	Birth Date: 09/05/18

#*S A V Registry 2831[AMF-CAF-XF] BW: 77
 #*S A V Sensation 5615[AMF-CAF-XF] WW Adj:
 #*S A V Blackcap May 4136[CAF] WW Ratio:
 #Connealy Right Answer 746[AMF-CAF-XF] YW Adj:
 BM Blackcap May 535 35 RA YW Ratio:
 #BM Blackcap May 35 SOAT CC YH Adj:

CED	BW	WW	YW	CEM	Milk	\$EN	CW	Marb	RE	Fat	\$M	\$F	\$B
Acc	Acc	Acc	Acc	Acc	Acc		Acc	Acc	Acc	Acc	\$W	\$G	
+5	+1.5	+61	+106	+4	+22	-25	I+44	I+40	I+60	I+.008	+33	+82	+124
.25	.35	.23	.22	.18	.16		.05	.05	.05	.05	+57	+42	

31	Tag: 1889	BM Emblazon 1889 X110	19644907
	Tattoo: 1889	Bull	Birth Date: 09/16/18

#*O C C Emblazon 854E[AMF-CAF-XF] BW: 81
 #*LD Emblazon 999[AMF-CAF-XF] WW Adj:
 #*SH Forever Lady 3124 5118[DDC] WW Ratio:
 #*S A V Final Answer 0035[AMF-CAF-XF] YW Adj:
 Double R Bar Lady X110[AMF-NHF-OHF] YW Ratio:
 Double R Bar Lady U17[NHC] YH Adj:

CED	BW	WW	YW	CEM	Milk	\$EN	CW	Marb	RE	Fat	\$M	\$F	\$B
Acc	Acc	Acc	Acc	Acc	Acc		Acc	Acc	Acc	Acc	\$W	\$G	
+9	+7	+56	+99	+9	+17	-11	I+20	I+27	I+36	I+.016	+45	+65	+97
.24	.36	.23	.21	.19	.20		.05	.05	.05	.05	+48	+31	

Outcross Heifer Bull

32	Tag: 1879	BM Whitlock 1879 611	19645686
	Tattoo: 1879	Bull	Birth Date: 08/03/18

#*S Chisum 6175[AMF-CAF-XF] BW: 70
 #*S Whitlock 179[AMF-CAF-XF] WW Adj:
 #S Pride Anna 709[OSF] WW Ratio:
 #MGMA Product B11[OSF] YW Adj:
 BM Donna 611 400 B11 YW Ratio:
 #BM Donna 400 700 W U YH Adj:

CED	BW	WW	YW	CEM	Milk	\$EN	CW	Marb	RE	Fat	\$M	\$F	\$B
Acc	Acc	Acc	Acc	Acc	Acc		Acc	Acc	Acc	Acc	\$W	\$G	
+6	+1.0	+61	+109	+10	+27	-21	I+50	I+16	I+51	I+.027	+38	+83	+110
.26	.35	.22	.21	.17	.16		.05	.05	.05	.05	+63	+27	

33	Tag: 1864	BM Generation 1864 408	19644908
	Tattoo: 1864	Bull	Birth Date: 09/03/18

#*Connealy Consensus 7229[AMF-CAF-XF] BW: 81
 #*V A R Generation 2100[AMF-CAF-XF] WW Adj:
 #*Sandpoint Blackbird 8809[AMF] WW Ratio:
 #*S A V Brilliance 8077[AMF-CAF-XF] YW Adj:
 BM Blackbird 408 04 Bri YW Ratio:
 #*BM Blackbird 04 328 1831 YH Adj:

CED	BW	WW	YW	CEM	Milk	\$EN	CW	Marb	RE	Fat	\$M	\$F	\$B
Acc	Acc	Acc	Acc	Acc	Acc		Acc	Acc	Acc	Acc	\$W	\$G	
+7	+1.5	+56	+99	+8	+25	-9	I+40	I+52	I+66	I+.012	+50	+90	+138
.25	.36	.24	.21	.21	.21		.05	.05	.05	.05	+57	+48	

Out of a very good cow

34	Tag: 1850	BM Generation 1850 157 120	+19653550
	Tattoo: 1850	Bull	Birth Date: 09/06/18

#*Connealy Consensus 7229[AMF-CAF-XF] BW:
 *V A R Generation 2100[AMF-CAF-XF] WW Adj:
 +*Sandpoint Blackbird 8809[AMF] WW Ratio:
 #+S A V Bismarck 5682[AMF-CAF-XF] YW Adj:
 BM Flower 157 757 BM[DDF-OHF] YW Ratio:
 BM Flower 757 354 P249[DDC] YH Adj:

CED	BW	WW	YW	CEM	Milk	\$EN	CW	Marb	RE	Fat	\$M	\$F	\$B
Acc	Acc	Acc	Acc	Acc	Acc		Acc	Acc	Acc	Acc	\$W	\$G	
I+6	I+1.7	I+57	I+101	I+9	I+19	-7	I+37	I+37	I+73	I-.013	+56	+93	+137
.05	.05	.05	.05	.05	.05		.05	.05	.05	.05	+53	+44	

ET Will add pounds to your calf crop



Leos Barron Red – 2003 Chestnut AQHA Mare

35	Tag: 1877	BM Hamilton 1877 2077 4294	19644911
	Tattoo: 1877	Bull	Birth Date: 09/07/18

#*A A R Ten X 7008 S A[AMF-CAF-XF] BW: 82
 +*MF Hamilton 4294 WW Adj:
 #+S A V Elba 4436[AMF] WW Ratio:
 #*Connealy Final Solution[AMF-CAF-XF] YW Adj:
 +*Bear Mtn Jamie 2077 YW Ratio:
 +*LaGrand Jamie H455 YH Adj:

CED	BW	WW	YW	CEM	Milk	\$EN	CW	Marb	RE	Fat	\$M	\$F	\$B
Acc	Acc	Acc	Acc	Acc	Acc		Acc	Acc	Acc	Acc	\$W	\$G	
+6	+1.8	+57	+106	+5	+24	-15	I+42	I+.29	I+.48	I+.018	+50	+100	+134
.18	.34	.20	.15	.13	.14		.05	.05	.05	.05	+53	+34	

Out of My Past Herd Sire that is Now working in the Neville Herd in Burwell



CD Sweet Hickory Pep – 2006 Sorrel AQHA Mare

Two AQHA Broodmares (due to foal April 2020)

2003 AQHA Leos Barron Red (Red) has had 3 babies and currently in foal to Jae Bar Dualin JD, breeding date of May 17, 2019. We have 2 of her daughters on site at Diamond B. Inc., York, Nebraska. Red is very easy to work around, stands tied, great for farrier, loads, takes shots and wormer, loves being handled/brushed. Red has been 5 panel tested and carries 1 copy of PSSM. Jae Bar Dualin JD is negative for all 5. Sire web posting and pedigree:

<https://www.ibardhorses.com/stallions.htm> and <https://www.allbreedpedigree.com/jae+bar+dualin+jd>

2006 AQHA CD Sweet Hickory Pep (PJ) is also bred to Jae Bar Dualin JD, breeding date of May 13, 2019. PJ is broke to lead, loads and stands tied. This will be her first foal. She has been 5 panel tested and is negative for all.

More pictures available on Craigslist – Omaha – at link below or search for broodmare, York.

<https://omaha.craigslist.org/grd/d/york-2-aqha-broodmares-to-foal-in-april/7081132850.html>

Both mares are current on all shots (including all 3 doses of Rhinomune this pregnancy, WNV, Sleeping Sickness/Tetanus, Influenza, and Rabies), both will have current health papers and coggins, and are currently under lights since December 2019. Breeders certificate in hand for both.

\$4,000 for the pair or \$2,500 for Red and \$2,000 for PJ. We will consider reasonable offers. Call or text Diane Buss (402.362.5439) or email diane@diamond-b.com if interested or if you want additional information.

We can provide video if desired. Red’s pedigree available here: <https://www.allbreedpedigree.com/leos+barron+red>

We are not currently planning to have these mares at the barn in Atkinson on sale day, but would be willing to have them on site that day if we get enough interest. They’ll be sold first if we get asking price or reasonable offer ahead of sale day.